

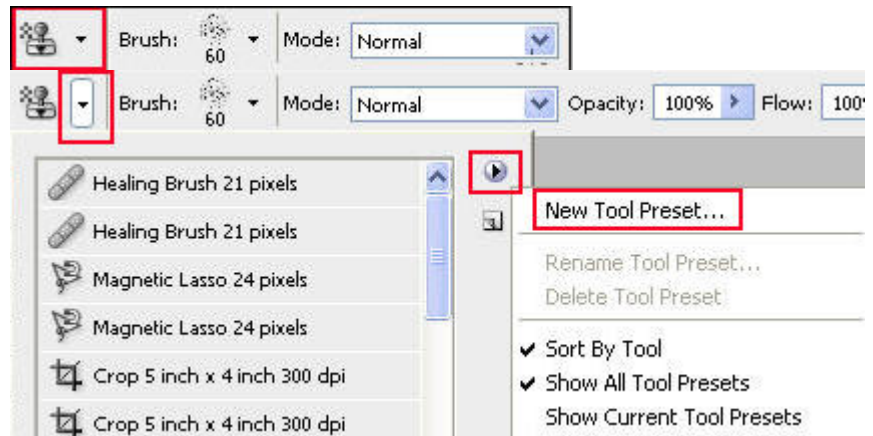
# Saving Presets

A Photoshop Tutorial © by Sylvia DiGeorgio

## Save your brushes as presets !

### Save your brushes with their own settings!

Click on the little arrow (see picture) by the pattern tool stamp (or the Brush Tool, the Smudge Tool, etc.), click on the little triangle on the right to display the drop-down menu and select **New Tool Preset**.



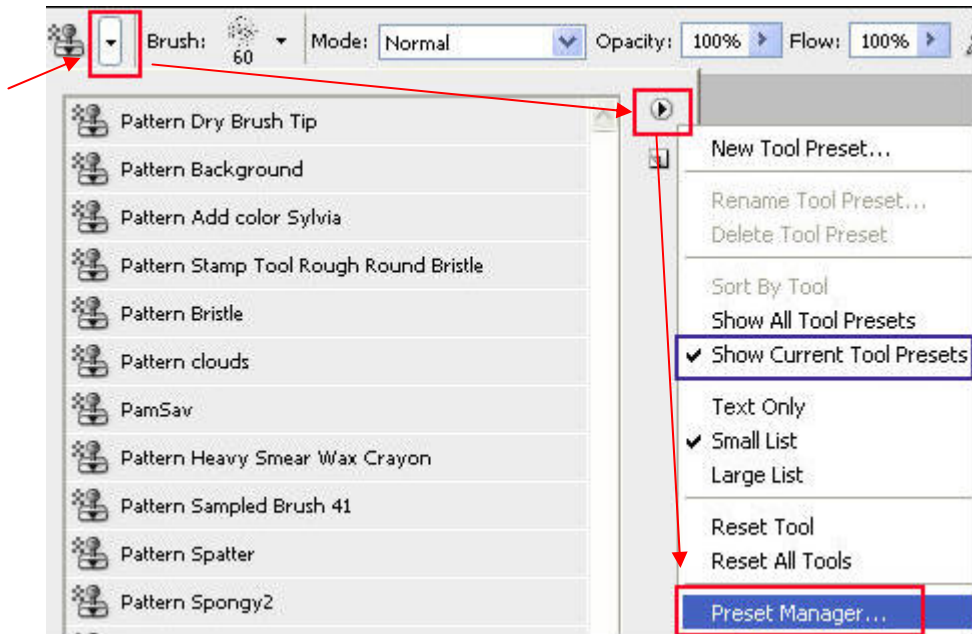
Name your new preset and click OK.



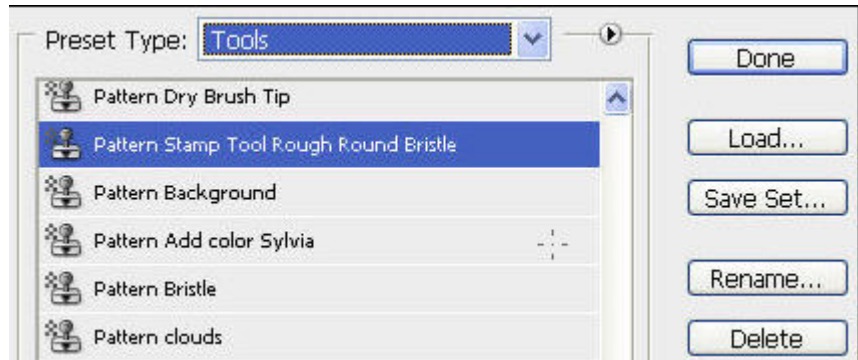
Your new preset will automatically be added at the bottom of the preset list.



If you would like to reorder the list, follow the steps as shown on the screen capture and select **Preset Manager**.



You can move the presets around, rename them, delete them, etc. Click on Done when you're finished.



**Don't forget to visit my website at**  
<http://abc-impact.com/>  
**for new tutorials and goodies to download!**

**Feel free to contact me for more information**  
**or feedback at [sylvia@abc-impact.com](mailto:sylvia@abc-impact.com)**

© This tutorial is copyrighted by Sylvia DiGeorgio  
and cannot be shared or sold without consent of the copyright owner.